

The All-in-One Intelligent ANPR Camera Just “Plug and Go”

The ANPRnow camera has integrated GPS, WIFI & 3G/4G allowing live upload and back-up buffering to provide up to one million cached reads ,uploads via an API supporting JSON, FTP, UTM1.2 and BOF2 Web Services. Various additional features can be added see overleaf for more.



Futronics have developed, built on MAV technology, this unique ANPRnow camera in response to many requests over the years for a reasonably priced and easily deployable product.

This enables the client to deploy the previously expensive ANPR facility to many more vehicles and because it requires no installation the deployment can be expanded to any car or commercial vehicle.



At it's base level the ANPRnow camera can be used for data gathering, requiring no input or action by the driver. A single windscreen camera can read multiple lanes at once.

Thanks to the advances in technology and reductions in component costs we have been able to develop the ANPRnow camera using the latest in processing and camera offerings available today.



This means that there is no need for a separate computer or built in screen, plus there is no requirement for complicated power management. The system will run continuously and simply buffer any reads if there is a temporary lack of 3G/4G connectivity.



ANPRnow

Features:

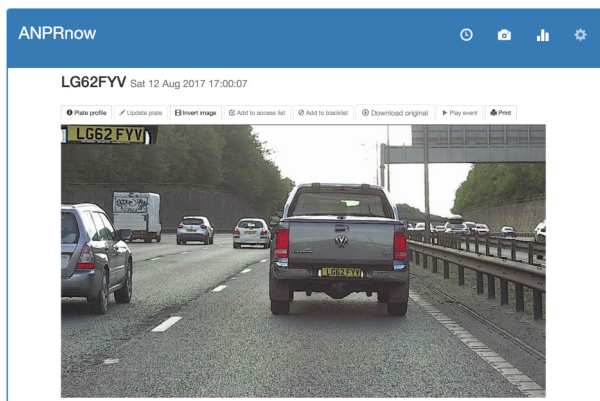
- **INTEGRATED ANPR ENGINE** – to provide high accuracy reads on multiple lanes
- **JSON WEB SERVICES** – simple integration into applications using open interface
- **ZOOM CAMERAS** – fully controllable truEZoom™ for the perfect field of view
- **VEHICLE READY** – power input allows direct power from vehicle socket
- **API CONTROL** - full control and configuration of the ANPR camera via a tablet or smartphone.

Benefits

- **No separate** Computer or ANPR license required
- Take from vehicle to vehicle
- Inconspicuous and no installation required
- No damage to car interior or exterior (Screw or Suction Cup Dash Mounting Options)
- Built in Blue/Amber emergency LED light (Optional)

Additional Options:

- Integrate DVR Recording of Windscreen Camera Video
- Integrate a Second Externally Mounted Camera with integrated IR (and overview), wired using a single cable back to front camera to provide communications and power
- In Vehicle Wireless Tablet for Alerts and displaying real time video.



Online
Back
Office
Images
and
ANPR
Reads



	Camera Specifications
Recognition Range	Capture of up to 12m of traffic lanes from 3m to 20m
Sensor	ANPR COLOUR: 1/3" 1920(H) x 1080(V) 16:9 rolling shutter (global optional), 25 fps
Motorised Lens	ANPR COLOUR: motorized zoom (8-22mm), focus and auto DC iris (p-iris optional)
Connectivity	Camera setup via integrated WiFi and browser, Data sent via 3G/4G
Optical Filters	ANPR COLOUR: Day/Night IR Cut Filter (auto/manual)
Camera Control	Integrated web server provides full camera setup pages and live preview, from any connected browser (no plug-ins required)
ANPR Engine Functionality	
ANPR Processor	Dual Core DSP with co-processor and two channel internal parallel video input
ANPR Software / Presets	Configuration upload via web based configuration pages for simple remote management
ANPR Engine Protocol	JSON web services provide full access to overview and plate patch images and metadata as push or pull messages for easy integration into applications (O/S independent) and via web pages
ANPR Metadata	Multiple plate tracking with IDs, full availability of plate movement/size data through field of view
ANPR Storage	Onboard storage 8GB (optionally 32GB) for up to 1 million buffered reads
ANPR Features	Image cropping options for Overview image, advanced de-skew and yaw correction, character spacing validation, country of origin matching, lane determination, direction of travel, plate tracking and geometry
Physical Specifications	
Operating Voltage	12VDC suitable for vehicle battery power
Network Connections	WiFi and 3G/4G
Power Consumption	Nominally 12W
Dimensions	175 x 125 x 60 mm (W x D x H) - excluding fittings/antenna
Weight	1.1kg excluding mounting options
Enclosure	Metal with mount options
Temperature / Humidity	0°C to 50°C operating with relative humidity non condensing
Service	
Customer Service	Friendly, helpful service for product ordering and repair returns
Technical Support	Comprehensive pre and post-sale technical support for full life of the product
Warranty	12 month warranty, extended warranties and factory repair/replacement programmes available
Long Term Supply	Complete support for the life of the product
Training	Comprehensive product training programmes for customers